



**PROVOST
LEADERSHIP PROFILE
2024–25**

LUTHER COLLEGE®

WittKieffer
Improving Quality of Life Through
IMPACTFUL LEADERSHIP

EXECUTIVE SUMMARY

Luther College invites applications and nominations for an experienced, forward-thinking, and collaborative leader to serve as the next Provost.

Located in the vibrant town of Decorah in northeastern Iowa, Luther is an undergraduate liberal arts college that serves approximately 1,400 students and is affiliated with the Lutheran Church (ELCA). With [60 areas of learning](#), Luther uniquely embraces the liberal arts through the curriculum generally, and specifically through its signature [Paideia program](#), an interdisciplinary, school-wide course series that asks students to contemplate complex questions. Luther is a Phi Beta Kappa institution, a recognition belonging to only 10 percent of colleges and universities, and its graduates have been honored with awards such as Fulbright, Rhodes, Goldwater, and NCAA Postgraduate scholarships. The college values learning beyond the classroom; internships, externships, and opportunities to collaborate with faculty on research are core to the Luther experience, as are [study-away experiences](#), with 300 to 400 students studying abroad each year. With one-third of all Luther students participating in music, Luther also has [one of the largest undergraduate music programs](#) in the nation. Luther takes seriously its mission to “practice joyful stewardship of the resources around us.” Green campus operations, partnerships with local businesses, and academic courses that incorporate sustainability have earned Luther a number of environmental leadership awards, including a top 10 national ranking on the AASHE Sustainable Campus Index.

Decorah is surrounded by natural beauty and agriculture. It lies in the Driftless Region, a beautiful environment of rolling hills, sandstone bluffs, waterfalls, and spring-fed creeks. The [community of Decorah](#) is just as unique and inviting as the landscape. Home to locally owned shops and restaurants and nationally known breweries and museums, Decorah bustles with culture, adventure, and a deep sense of community.

This is a significant time of opportunity and momentum as Dr. Brad Chamberlain becomes Luther’s twelfth President and enacts a vision that creates alignment around Luther’s purpose and continues to prepare students for lives of meaning and service. The Provost will join a new President, dedicated faculty and staff, a highly committed and student-focused Cabinet, and an engaged Board of Regents in advancing a commitment to academic and extracurricular excellence while continuously innovating and evolving. They will have strong and energized partners in Academic Affairs, Student Engagement, and Student Success as part of the integrated provost model at Luther. The successful candidate will bring their leadership, vision, and a spirit of continuous improvement as this new model is fully enacted at Luther.

The Provost should be a collaborative, creative, and open-minded leader who has a strategic vision, global view, intellectual curiosity, and the personal qualities and integrity to inspire the community and lead the college to new levels of excellence. The ideal candidate should be an experienced administrative and academic leader with the skill to lead in an integrated provost model and serve the entire college as a member of the President’s Cabinet. The next Provost should have a confident yet humble presence and be an excellent listener who is open to feedback and suggestions from a variety of constituencies. Coupled with an eye for innovation, the successful candidate should bring to the role a record of teaching along with scholarly and administrative prowess reflective of Luther College’s own high standards. The next Provost will possess a Ph.D. or its equivalent, ideally in one of the disciplines represented at Luther.

To submit a nomination or express personal interest in this position, please see Procedure for Candidacy at the end of this document.



ROLE OF THE PROVOST

The Provost at Luther College will be a key voice in the President's Cabinet and will lead a division that creates an integrated approach to student-facing work. As the chief academic officer and the chief student engagement officer, the Provost will be an individual who can understand and affirm the crucial importance of co-curricular programs and initiatives; the residential experience; student leadership development; diversity, equity, and inclusion; and retention, advancing the evolution of an integrated student model that allows the college to think cohesively in and out of the classroom.

The Provost, in concert with the President, will provide energetic and creative leadership and clear vision aligned with institutional mission and goals. Reporting to the Provost will be Academic Affairs, Student Engagement, and Student Success. Under the Provost's purview are 144 full-time and 20 part-time faculty members, 75 staff, and a budget of \$22.4 million. The Provost will be assisted by three Deans, one who also serves as Associate Provost.

Additionally, the new leader will serve as a staff liaison to the Board of Regents' Academic Affairs, Campus Life, and Financial Sustainability Committees.

OPPORTUNITIES AND EXPECTATIONS FOR LEADERSHIP

Luther College's next Provost will have the distinct opportunity to join an engaged campus community and advance a holistic approach that makes a meaningful difference for the Decorah community and the students the college serves. While leading as the chief academic officer and the chief student engagement officer, the Provost will play a pivotal role in maintaining and enhancing the student experience at Luther; in evolving the academic program; in short- and long-range planning; and in helping to steer the college toward a bright, successful future.

Key priorities for the next Provost include, but are not limited to, the following interrelated opportunities:

Maintain focus on the student experience: A heavily residential college, Luther has strategically invested in improving the overall student experience through its integrated provost model. The next Provost will accelerate this strategic effort to improve the overall student experience, recognizing its nexus with retention, completion, and ultimately the college's academic affairs budget. This leader will elevate the integration, coherence, and focus on the student experience, bringing contemporary theory and practice to Luther College.

Evaluate the academic program array: Through collaborative shared governance, and in light of student makeup and market demand, a significant piece of the Provost's charge will be the ongoing evaluation of Luther's academic portfolio. As student and employer needs continue to change, the Provost will engage in program review, continuously aligning offerings with the Luther College mission, the liberal arts tradition, and Lutheran higher educational values. In the context of national enrollment pressures, the Provost will hone a distinctive academic portfolio and consider how those offerings are delivered and to whom. Alongside program mix and pedagogical strategy, they will also work collaboratively to envision the appropriate student body makeup for Luther at this time.

Work collaboratively with the President and Cabinet to advance a sustainable budget: Like many small, rural institutions, Luther College is working to strengthen its operating budget. While much progress has been made, the Provost will be a key partner in executing the plan for a balanced budget. By rebalancing the academic program array and then aligning staffing to support that array with a prudent student-to-faculty ratio, the Provost will support a sustainable budget pathway from which the college can then invest strategically in growth.

Fully activate the integrated provost model: Luther's commitment to an integrated provost model, which brings both curricular and student life programming under the Provost's purview, centers a holistic vision for the student experience. The next Provost will continue to refine this organizational model, clarifying roles and areas of responsibility among the three Deans reporting to them. They will bring vision, purpose, and strategy to the full expression of this integrated model in service to student retention and completion, empowering the Deans to bring strategy to action and formalizing policies and processes that strengthen operational effectiveness.

Enhance community through shared purpose: The arrival of the new Provost will guide Academic Affairs toward stability and consistency, deepening the college's long-standing culture of collegiality and collaboration. At Luther, authentic listening and relationships are key to creating a shared direction and limiting turnover. By bringing a steady hand and commitment to building community and engaging in shared governance, the next Provost will build pride, belonging, and the collective effervescence that are fundamental to Luther College.

Serve as a partner to the President: As the chief academic officer for the college and the chief student engagement officer, the Provost is a critical member of the new President's leadership team. As the past Provost, incoming President Brad Chamberlain will provide institutional memory, guidance, and true partnership while also empowering the Provost to imagine new ways to achieve excellence.

Elevate academic and student interests in the next comprehensive campaign: As incoming President Chamberlain lays the groundwork for a comprehensive campaign, the Provost will bring an ambitious academic focus and expertise to the process of shaping the campaign pillars. Academic strength will likely be prominent in the campaign goals, and the Provost has the opportunity to shape how those goals are expressed and resourced philanthropically. A successful effort will position Luther College to strengthen and expand its reputation for academic excellence and to innovate through its academic program.

PROFESSIONAL QUALIFICATIONS AND PERSONAL QUALITIES

The next Provost of Luther College will possess many of the following professional qualifications and personal qualities:

- Proven academic leader with a vision to inspire and motivate
- Seasoned administrator with evidence of progressive managerial experience
- A deeply curious leader focused on the variety of academic disciplines at the college and their possible intersections
- An eloquent advocate for the selective, residential, liberal arts college experience
- Student-centered educator with a history of meaningful engagement with co-curricular and student success initiatives
- A leader with a proven track record of success in driving diversity, equity, and inclusion efforts
- Inclusive decision maker who builds consensus, makes difficult decisions when necessary, and communicates decisions with clarity and care
- An entrepreneurial person with financial acumen who will aid the college in matching aspirations with finite resources while thinking creatively about growth opportunities
- Data-driven planner with experience in assessment and outcomes measurements as well as accreditation efforts
- Superb listener and communicator who is at ease in a multitude of settings with multiple constituencies
- Strong manager with a history of and commitment to accountability and implementation
- A “student” of higher education, knowledgeable about the major trends influencing liberal arts institutions nationally
- Respectful community member who understands, appreciates, and supports the college’s history and mission
- Engaged citizen who embraces the character of the college’s surrounding community and will value the quality of life in and around Decorah
- Leader with strong emotional intelligence who guides with care, authenticity, respect, empathy, and social awareness

#1

Luther ranks first among Iowa private colleges for learning opportunities, community and social life, and learning facilities
(Wall Street Journal/College Pulse)

#1

Luther is the Hidden Gem of Iowa
(College Raptor)

#7

Luther ranks nationally among colleges on the Sustainable Campus Index



ABOUT LUTHER COLLEGE

The Luther College Mission

In the reforming spirit of Martin Luther, Luther College affirms the liberating power of faith and learning. As people of all backgrounds, Luther's community embraces diversity and challenges one another to learn in community, to discern their callings, and to serve with distinction for the common good.

As a college of the church, Luther is rooted in an understanding of grace and freedom that emboldens its community in worship, study, and service to seek truth, examine their faith, and care for all God's people.

As a liberal arts college, Luther is committed to a way of learning that moves beyond immediate interests and present knowledge into a larger world—an education that disciplines minds and develops whole persons equipped to understand and confront a changing society.

As a residential college, Luther is a place of intersection. Founded where river, woodland, and prairie meet, the college community practices joyful stewardship of the resources that surround it and strives to be a community where students, faculty, and staff are enlivened and transformed by encounters with one another, by the exchange of ideas, and by the life of faith and learning.

Learn more about [Luther's approach to academics](#).

The College, Past and Present

Located in the vibrant town of [Decorah](#) in northeastern Iowa, Luther is an undergraduate liberal arts college affiliated with the [Lutheran Church \(ELCA\)](#) that emphasizes the intersection of the liberal arts and vocation as a force for action and service.

Luther College today is in a strong position, with much to celebrate. [Ranked among the top liberal arts colleges](#), Luther is nationally recognized for its foundational Paideia program, the number of students awarded prestigious Fulbright scholarships, and the percentage of students who study abroad. Luther's program in music enjoys international distinction, and the college is a leader in environmental sustainability. Within months of graduation, nearly 100 percent of Luther graduates are employed, engaged in graduate or professional study, or involved in volunteer service. Luther graduates push the frontiers of science; build thriving businesses; educate and nurture children; address disease, poverty, and injustice; develop new technologies; protect the earth and promote sustainability; strengthen faith; and create art and music that elevate the spirit and nourish humanity.



Quick facts

1,384
students

60+
majors, minors & programs

10:1
student-to-faculty ratio

15
average class size

93%
of full-time faculty
have a terminal degree

8
Rhodes Scholars

45
Fulbright Scholars

36
Davis Projects for Peace
grantees

42
NCAA Postgraduate Scholars

Luther's identity as a college in the Lutheran tradition (ELCA) marks the college as a community that is both rooted and open. Neither sectarian nor secular, Luther College shapes lives of meaning and purpose in service to the neighbor. Luther's community seeks excellence informed by a tradition that couples freedom of inquiry with intellectual humility. The college holistically educates mind, body, and spirit to promote the well-being of individuals so that communities may flourish. It practices radical hospitality, welcoming all so that they may learn from all. Luther College is a laboratory for life. Its residential setting in a thriving town surrounded by natural beauty invites immersion and exploration. Students take risks, test new roles, and develop their goals and values in a collaborative and supportive community. They develop lifelong skills and relationships; an entrepreneurial spirit; and a sense of wonder, purpose, and adventure.

An education at Luther College is a transformation more than a transaction. The college's deeply invested faculty and staff are committed to ways of learning, teaching, and mentoring that encourage students to achieve their highest potential. Working together, faculty and staff create the signature quality of Luther College: an education individually crafted with students to promote growth and discovery.

History

The first college in America founded by Norwegian immigrants, Luther College was established in 1861 with a vision for a more just society and named for a reformer compelled by conscience. For both, education was the key. Luther's history is based upon principled stands. Its namesake, Martin Luther, proclaimed the dignity of every human person and the inherent freedom promised by the Christian faith. The immigrant founders staked their future on an opposition to a theological justification of slavery. Today, Luther College's model of education, based on these principles, remains powerful, even as it is adapted to meet the needs of an ever more diverse and interfaith population.

After discussions extending over several years, the Norwegian Evangelical Lutheran Church in America decided on October 10, 1857, to found a college and began to gather subscriptions for a building fund. Until suitable buildings could be erected, students were sent to Concordia College and Seminary in St. Louis, and a Norwegian professorship was established there on October 14, 1859, which is designated as Founders' Day by the college. In 1862 the college opened in Decorah, and the first building on the campus was dedicated on October 14, 1865. The first graduating class was that of 1866. Luther College utilized a classical curriculum, which was changed in 1932 when the requirement that all students take both Greek and Latin was dropped. For 75 years the school admitted men only, until in 1936 when Luther College became coeducational. Over the years the college had expanded its academic program to include the professional areas of nursing and social work, several pre-professional programs, and a robust study abroad program—all grounded in Luther's commitment to the liberal arts.



Value and affordability

95%

of graduates (past 25 years)
are employed, in grad school,
or doing service work within 8
months of graduation

100%

of students receive financial
assistance

\$48.1 million

in gift aid awarded by Luther
annually

850

different scholarship funds
provide Luther gift assistance
annually

Campus

Luther's central campus, situated on nearly 200 acres of limestone bluff country, comprises eight major academic buildings, six residence halls, one village of townhouses, a 200,000-square-foot athletic complex, and a bustling student union. At the heart of it all sits Bentdahl Commons, a campus green that acts as a gathering space for the Luther community. Connected by curving sidewalks, Luther's central campus has the distinction of reflecting historic landscape design, mapped in the early 1900s by renowned architect Jens Jensen. The midcentury modern aesthetic of several core campus buildings recently led to it being designated as a National Historic District on the National Register of Historic Places.

The college owns nearly 800 additional acres of natural areas that include woodlands, floodplains, prairies, marshes, and the Upper Iowa River. These areas, tied together by a five-mile hiking trail, offer recreational opportunities and provide students with outdoor laboratories.

To take a virtual tour of campus, [click here](#). To view Luther's official YouTube channel, [click here](#).

Sustainability

Luther College has a deep, campus-wide commitment to [sustainability](#) and has reduced its greenhouse gas emissions by more than 72 percent since its baseline was established in 2003. Achieving this milestone puts the college on track to achieve carbon neutrality by 2030. Luther College's Center for Sustainable Communities focuses on four aspects of sustainability: energy and climate, food and wellness, education and outreach, and land stewardship. Its mission is to be a catalyst for sustainable change.

Luther envisions a prosperous, equitable, and ecologically healthy world. It strives to bring about that world while providing unique opportunities for students to develop the skills and abilities to meet sustainability challenges.



A well-rounded student body

80+

student organizations

50+

campus-wide events
sponsored by student
organizations each semester

30%

of Luther students participate
in musical ensembles

40%

of Luther students participate
in intercollegiate athletics

70%

of Luther students volunteer for
service work

90%

of students live on campus

Points of Pride

A top national liberal arts college: [A wide range of ranking sources](#) include Luther College as among the top colleges in the country. Luther also holds top-ranked positions among state, regional, and peer intuitions, including high marks from notables such as *U.S. News and World Report's Best Colleges*, *Wall Street Journal*, and surveys of alumni.

Signature Paideia program: A tradition developed in 1977 named for the classical Greek term for "education," [the Paideia program](#) continues to encourage students to become intellectually well-rounded citizens. The shared foundation of Paideia is at the core of Luther's community approach and grounds students for success as the students and faculty read, think, discuss, and write about the questions and choices that matter.

International diversity: Luther ranks among the Schools with the Most International Students for National Liberal Arts Colleges in *U.S. News and World Report's Best Colleges*. Students from 77 different countries in 2024–25 enrich the Luther community and educational experience, and Luther participates in the Davis United World College Scholars program.

Hidden gem college: College Raptor helps students and families find affordable schools that meet their career goals. It released a list of Hidden Gem Colleges in the U.S., ranking Luther as the Hidden Gem of the state of Iowa as well as the No. 1 Hidden Gem of the Plains Region.

One of the best college towns in America: Luther's hometown of Decorah was ranked among the top 50 Best College Towns in the United States based on public schools, cost of living, job opportunities, crime, and local amenities.

Best- value college: Luther ranks among the top 10 best-value colleges in Iowa, according to SmartAsset Advisors, based on its financial aid awards, graduation rates, living costs, and starting salaries of graduates.

Sustainability commitment: Luther is ranked seventh among baccalaureate institutions nationally on the Sustainable Campus Index (AASHE 2022 Sustainable Campus Index). Rankings are measured by the Sustainability Tracking, Assessment, and Rating System (STARS).

LUTHER BY THE NUMBERS

- Enrollment of approximately 1,400 undergraduates.
- More than 60 majors, minors, and programs.
- 24 academic departments.
- Eight major academic buildings and five performing arts and recital halls.
- A picturesque campus of almost 200 acres of limestone bluff along the Upper Iowa River.
- An additional 800 acres of natural areas to conduct field research.
- 300 to 400 Luther students study away, domestically or internationally, each year.
- 92 percent of students live on campus in welcoming, renovated residences.
- 95 percent of professors live within five miles of the Luther campus.
- Students from 77 countries and 44 states create an engaged student body and a deep sense of community.
- Over 80 recognized student organizations.
- Five major academic research and service centers drive a vibrant campus culture:
 - **Center for Global Learning** provides opportunities for students to enhance their academic development through engaging with international study opportunities.
 - **Center for Sustainable Communities** coordinates all sustainability initiatives at Luther College, leads the way in Luther's repeated top 10 rankings for sustainability efforts among peer institutions, and has the institution on a pathway to carbon neutrality in the 2030s.
 - **Center for Ethics and Public Engagement** aims to extend conversation beyond the classroom by examining assumptions, exchanging ideas, and encouraging responsible action throughout the world.
 - **Torgerson Center for Nordic Studies** honors Luther's legacy as the first college in the United States founded by Norwegian immigrants and is the only endowed undergraduate Nordic Studies Center in the United States.
 - **Center for Intercultural Engagement and Support** is a student-centered office focused on student success, building intercultural relationships, and guiding students toward self-agency.
- Luther's 21 intercollegiate teams have won 246 conference championships (166 men, 80 women) and have enjoyed 114 national tournament appearances and 28 individual national champions with the Norse's 22nd sport, women's wrestling, set for 2025–26.
- One-third of all Luther students participate in large ensembles, faculty-coached chamber groups, private lessons, and master classes. Luther features more than 20 ensembles, six that tour nationally and four internationally with participation from majors across all disciplines.
- Luther's signature *Christmas at Luther* program is an Emmy Award–winning production performed by 450 musicians. It is seen live by 5,500 people each year at the Center for Life and Faith and viewed by thousands more across regional television stations and live-streamed around the world.
- Over 35,000 Luther alumni; their connections to their alma mater and the broader college community are integral to the success of the institution.



NEW STUDENT PROFILE (FALL 2024)

Test scores

25
ACT composite
(average)

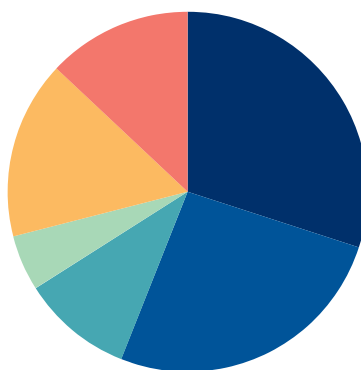
Class rank

73% top 50%
46% top 25%
21% top 10%
13% top 5%

First-year enrollment

402

Geographic distribution

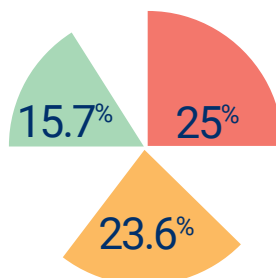


29.6% ■ Minnesota
26.7% ■ Iowa
9.6% ■ Wisconsin
5.3% ■ Illinois
15.6% ■ Other states
(20 states)
13.2% ■ International
(39 citizenships/countries)

Gender, ethnicity, and first-generation

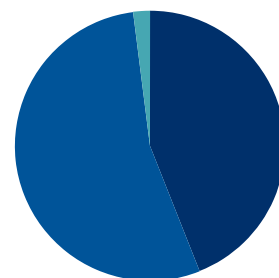
U.S. BIPOC

First-generation



U.S. and international BIPOC

43.8% ■ Female
54.5% ■ Male
1.5% ■ Non-binary





VISION AND STRATEGIC FRAMEWORK 2023 THROUGH 2025

Looking to the next two years, the following text sets forth the vision and strategic framework for Luther College.

Luther College will be an institution of higher education that is both grounded and global. It is grounded in its history, mission, and identity as a welcoming community that values the intersections made possible by living and learning in Decorah, Iowa, and the Driftless Region of the Midwest. The College recognizes that its vitality and sustainability are interdependent.

Luther College is global in its curricular approach, in the high participation of international students who study here and of international and domestic students who study away, and in the impact the college's graduates have as stewards of the global common good as a result of their education.

To advance this vision, Luther College will be adaptable in its response to a changing world and will use the principles of integration, coherence, and focus to guide its strategy and operations.

Given this commitment and acknowledging the headwinds facing higher education, Luther must focus on the following areas in the next two years: expanding its reach; aligning its resources and experiences with its mission, vision, and brand strategy; and strengthening its organization.

Governance

Luther is governed by a Board of Regents that represents a variety of professions. Comprising up to 31 members, the current board includes 23 external members.

The Board of Regents meets three times a year and provides fiduciary leadership of Luther College and conducts business through various committees. J. Robert Paulson '78 has served as chairperson since 2022 and his current tenure is set to expire in 2025.



LEADERSHIP

Bradley Chamberlain, President-elect

In October 2024 Brad Chamberlain was selected by the Luther College Board of Regents to become the twelfth president of the institution.

With a career of over two decades at Luther, Chamberlain began as an instructor in chemistry in 2001 and has risen through the academic and administrative ranks. On February 7, he will take over from current President Jenifer K. Ward who announced in 2024 her intention to retire during the upcoming academic year.

In his administrative career, Chamberlain's most recent position as Provost began with his appointment as the interim in August 2022, then the permanent selection in December 2022. Utilizing his decade of experience within the academic enterprise, Chamberlain brokered new academic programs and shepherded Luther through a successful interim evaluation by the Higher Learning Commission. He also expanded the Office of Student Success with the addition of Advising, the Career Center, the Center for Excellence in Learning and Teaching, and the Writing Center to create an integrated student success model, the first of its kind at Luther.

Prior to Provost, he was the Vice President for Mission and Communication from 2019 until 2022. Chamberlain led the implementation of Luther's first integrated brand strategy. It included the integration of newly identified brand pillars, a refreshed visual identity, social media strategy, and a redesigned [website](#). In addition, Chamberlain developed the college's first strategic internal communications plan and co-led the COVID Response Team, under which he provided leadership for the development of a set of indicators and alert levels that provided a flexible and phased approach for all curricular and co-curricular operations during the height of the pandemic.

"When people think about a college that is drawing excellence out of students, I want them to think about Luther College. Students arrive at Luther with a set of dreams, and we help them achieve those dreams. But we also want to plant within them dreams that are bigger than the ones they brought with them."

*—President-elect
Brad Chamberlain*

Joining Luther College in the fall of 2001 as a visiting professor, Chamberlain has devoted his entire academic and administrative career to Luther. In the classroom, he progressed through the ranks, earning tenure in 2007, becoming a full professor in 2014, and chairing the chemistry department from fall 2014 until spring 2018. A chemist with a specialty in polymers and plastics, Chamberlain has many international, national, and regional publications and presentations ranging from the American Chemical Society to the Royal Society of Chemistry.

Starting with research-based grants and external awards, Chamberlain has generated more than \$800,000 in total awards. He is also the co-owner of a patent related to his work in polymers. His collaborative research with students was a hallmark of his time in the classroom, with more than 60 mentored undergraduates, three-quarters of whom entered graduate or professional programs and received a wide range of honors, including a Goldwater Scholar and 11 senior honors projects.

In parallel with his research and teaching, Chamberlain began a career of academic leadership at Luther, serving the first of his two terms chairing the College's Academic Planning Committee in 2006. Leading the shared-governance committee charged with oversight of Luther's curricula, Chamberlain co-facilitated a revision of the college's general education curriculum and brokered the creation of new interdisciplinary majors.

Between his two stints with Academic Planning, he was Co-director of the College Science Enrichment Project and Luther's campus director for the Louis Stokes Alliance for Minority Participation. Both programs sought to uplift STEM disciplines utilizing external grants. As a part of a 16-institution consortium to broaden support for underserved populations, more than half of the students who participated in the Stokes Alliance program obtained admission to graduate and professional programs.

Graduating magna cum laude with his bachelor's in chemistry from Gustavus Adolphus College, Chamberlain earned his Ph.D. in chemistry from the University of Minnesota. Before joining the Luther faculty, he completed a postdoctoral fellowship at Cornell University. A lifelong learner, Chamberlain has continued his education with professional certifications ranging from fundraising management from Indiana University's Lilly Family School of Philanthropy to diversity, equity, and inclusion from Cornell University's online campus. He is set to complete his latest professional certification in strategy from the Harvard Business School's online program in January 2025.

A frequent speaker at Chapel and Luther's student-led worship services, he is the husband of Julie Torkelson Chamberlain, and the couple have rooted their family in Decorah. A 1996 graduate of Luther, Julie taught middle school English, worked part time in Luther's admissions office for 15 years, and now serves as the lead pastor of a local congregation. Their oldest son, Drew, is a three-time American Rivers Conference swimming champion and 14-time all-conference junior swimmer for the Norse. Their youngest, Liam, is a senior at Decorah High School.



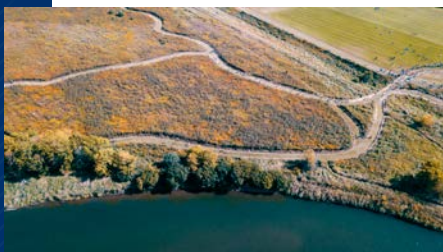
DECORAH, IOWA

[Decorah](#) is a hidden gem that lies in the Driftless Region, a beautiful environment of rolling hills, sandstone bluffs, waterfalls, and spring-fed creeks. And the community of Decorah is just as unique and inviting as the landscape. The county seat of Winneshiek County, Iowa, Decorah has a population over 7,500. Going to Luther is synonymous with living in beautiful Decorah and over 1,000 alumni live in the city.

The small community feel is augmented by the conveniences of a city many times the size, as Decorah serves as the commercial, medical, and cultural hub of northeast Iowa. Recently, U.S. News and World Report named Decorah High School as a top high school in Iowa. Decorah frequently appears on lists of the nation's most beautiful and must-visit towns published by a wide range of media outlets as HGTV, *Architectural Digest*, Thrillist, and more. Its downtown area has been highlighted by [state](#) and [regional](#) tourism programs.

Each July Decorah is the home of [Nordic Fest](#), a celebration of Scandinavian culture. Decorah is also the home of the [Vesterheim Norwegian-American Museum](#). This museum is the largest Norwegian museum in the United States.

Natural features include Dunning's Spring, Ice Cave, and Twin Springs. The city is home to [numerous parks](#) built on bluffs, particularly Phelps Park, Palisades Park, and Pulpit Rock. Along with the unique geography known as the Driftless, Decorah is located in [one of only 200 significant impact craters in the world](#), documented by informational displays at Luther College and nearby Van Peenen Park.





PROCEDURE FOR CANDIDACY

All applications, nominations, and inquiries are invited. Applications should include, as two separate documents, a CV or resume and a letter of interest addressing the themes in this profile. Professional references are not requested at this time.

WittKieffer is assisting Luther College in this search. For fullest consideration, candidate materials should be received by March 5, 2025.

Application materials should be submitted to
Luther-Provost@wittkieffer.com.

Nominations and inquiries can be directed to:
[Amy Crutchfield](#), [Melody Rose, Ph.D.](#), and [Natalie Song](#)



It is the policy of Luther College to provide equal educational opportunities and equal access to facilities for all qualified persons. The college does not discriminate in employment, educational programs, and activities on the basis of age, color, creed, disability, ethnicity, gender identity, genetic information, national origin, race, religion, sex, sexual orientation, veteran status, or any other basis protected by federal or state law.